



Many Hats!

Ellen J. Yoffa
Director, Emerging System Technologies
IBM Thomas J. Watson Research Center
yoffa@watson.ibm.com



Research Director

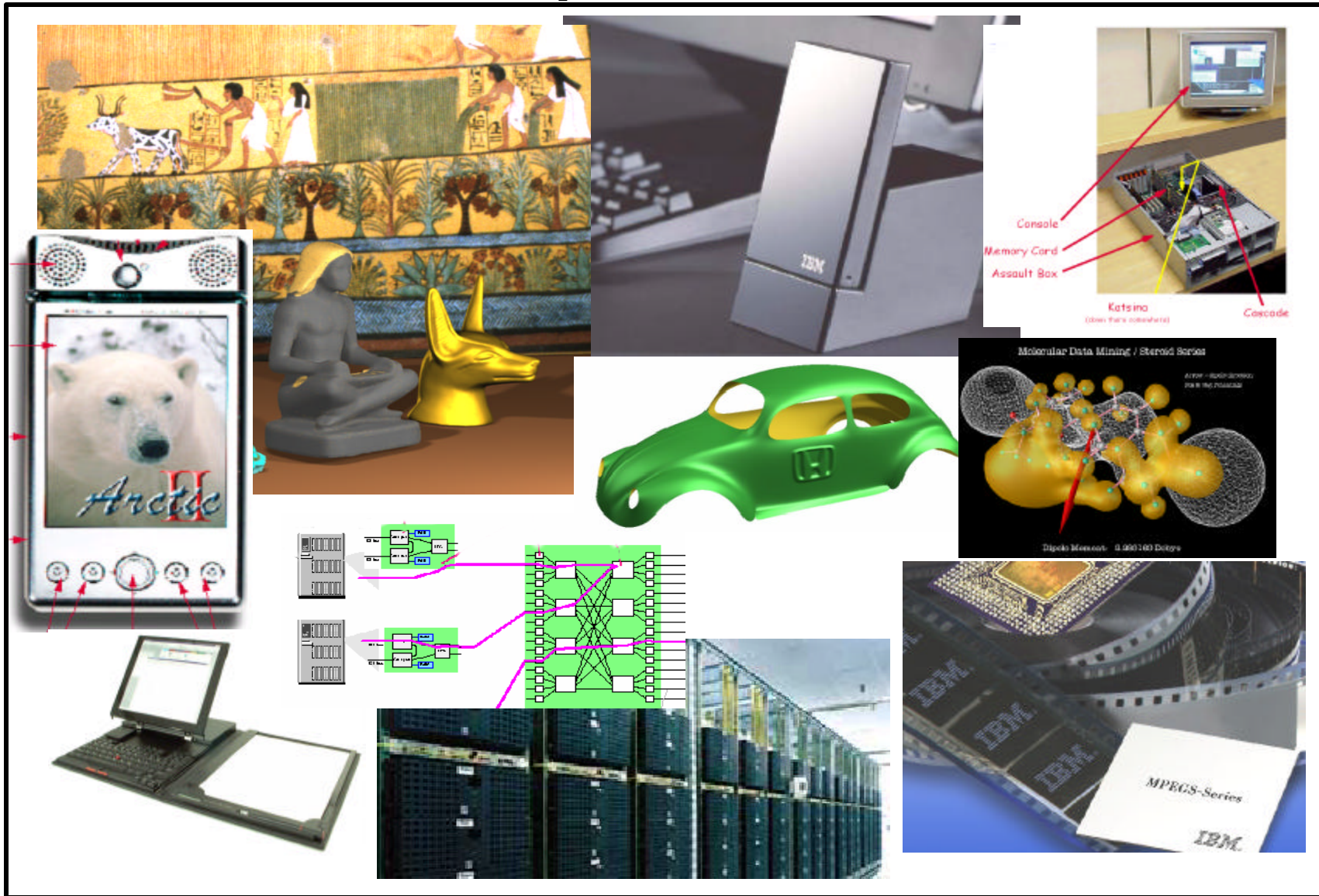
Research Strategist

Partner to Development

Partner to Customers

Career Mentor

Emerging System Technologies Department





Algorithms and Theory
Artificial Intelligence
Communications &
Networking
Computational Biology
Computer Architecture
Data Management
Design Automation
Distributed & Fault-Tolerant
Computing
eCommerce
Electrical Interconnect &
Packaging
Graphics & Visualization
Human-Computer Interaction
Knowledge Discovery & Data
Mining



Mobile Computing
Multimedia
Natural Language Processing
Operating Systems
Operations Research
Performance Modeling &
Analysis
Programming Languages &
Software Engineering
Security
Signal Processing
Statistics
Storage Systems
User Interface Technologies
Verification Technology
VLSI Design
Web

Professional Interest Communities



Research Director

Research Strategist

Partner to Development

Partner to Customers

Career Mentor

Worldwide Research Network



Manage the Matrix

Dual Research Hierarchies

Line

Strategy

VPs/Lab Directors



Strategy



Directors



Substrategy



2nd Line Managers



Areas



1st Line Managers

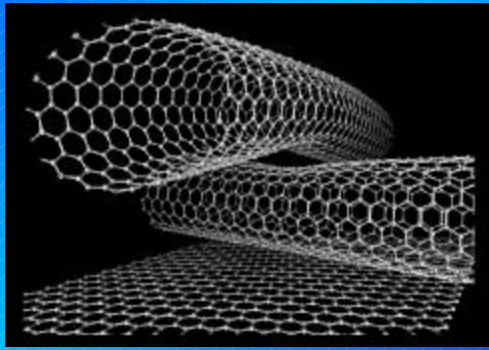


Projects



Strategy Areas

Exploratory Science



Servers & Embedded Systems



Personal Systems



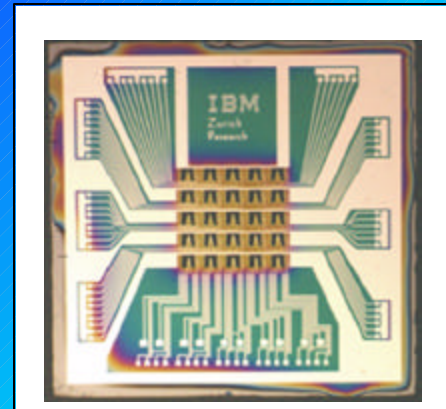
Services & Software



Storage Systems



Technology





Personal Systems





Research Director

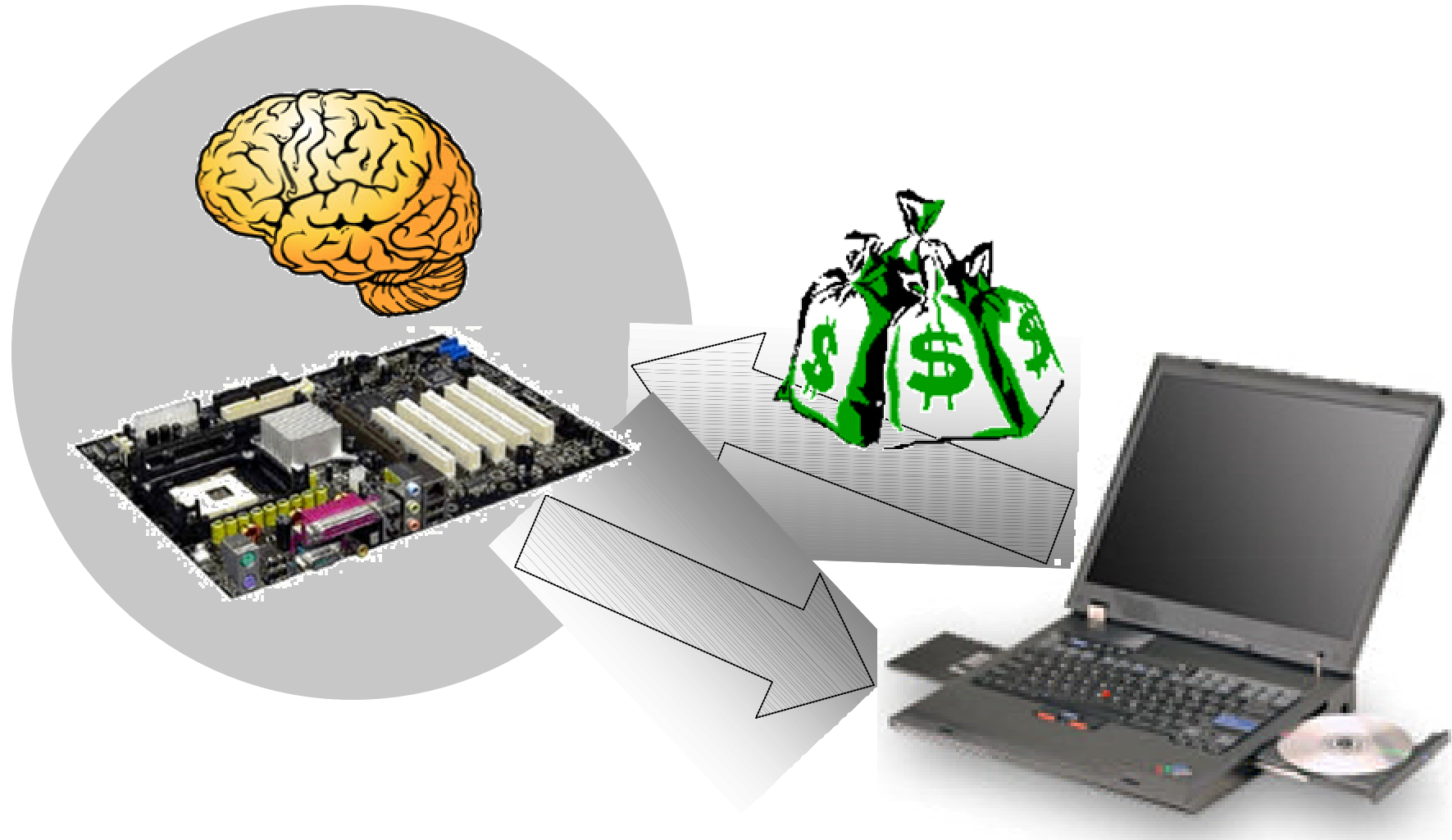
Research Strategist

Partner to Development

Partner to Customers

Career Mentor

Personal Systems Institute





Research Director

Research Strategist

Partner to Development

Partner to Customers

Career Mentor



Industry Solutions Lab





Research Director

Research Strategist

Partner to Development

Partner to Customers

Career Mentor





Research Director

Research Strategist

Partner to Development

Partner to Customers

Career Mentor